



杭州瑞科化工有限公司

HANGZHOU RIGHT CHEMICAL CO., LTD.

Address: Rm. 612, Building 12, Xue Yuan Chun Xiao, Xue Yuan Road, Hangzhou 310012, P.R. China.

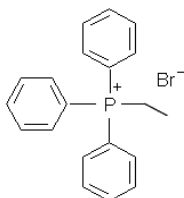
Tel: +86-571-88254703 Fax: +86-571-88254723

E-mail: info@ruikechem.com Website: www.ruikechem.com

Technical Data Sheet

ETPPBR

Chemical name:	Ethyltriphenylphosphonium bromide
CAS No.:	1530-32-1
EINECS:	216-223-3
Molecular formula:	$(C_6H_5)_3C_2H_5PBr$
Molecular weight:	371.25
Molecular structure:	



Technical Data

Appearance:	White to off-white crystals
Melting range:	206.5-212°C
Assay:	Min. 98%
Loss on drying:	Max. 0.5%
Triphenyl phosphine:	Max. 0.5%
Triphenyl phosphine oxide:	Max. 0.5%

Applications

- As reagents for the Wittig synthesis.
- As phase transfer catalysts
- As catalyst in the production of epoxy resins
- As catalyst in the production of powder coatings and polyester resins for powder coatings
- As additives for plastics (polymers) as stabilizers, curing agents, light protection agents, accelerators

Packing

25kg or 80kgs net per drum

Storage and Handling

Storing in the cool and dry place, keep packages closed after use to avoid moisture

Shelf Life

At least 1 year when properly stored

Notice: Due to our products are going to be improved the key technical data or specifications for the above product described in this publication the may be changed from time to time Rightchem reserves the right to change the specifications of its products without prior notice.

Although the information in this publication is based on our own investigation and is believed reliable, Rightchem can not assume any responsibility for performance or results obtained through the use of our products herein described. Neither we nor our commission agents shall be liable for any injury, loss or damages directly or indirectly caused by our products. The user is held to check the quality, safety and all other properties of our product before using. Nothing herein is to be taken as permission or recommendation to practice any patented invention without a license.